

There are a number of factors to take into account when formatting artwork for GeoTwinLabels. The standard submission specifications for flexo labels shall also apply. Below is an overview of the additional considerations for GeoTwinLabels.

GENERAL

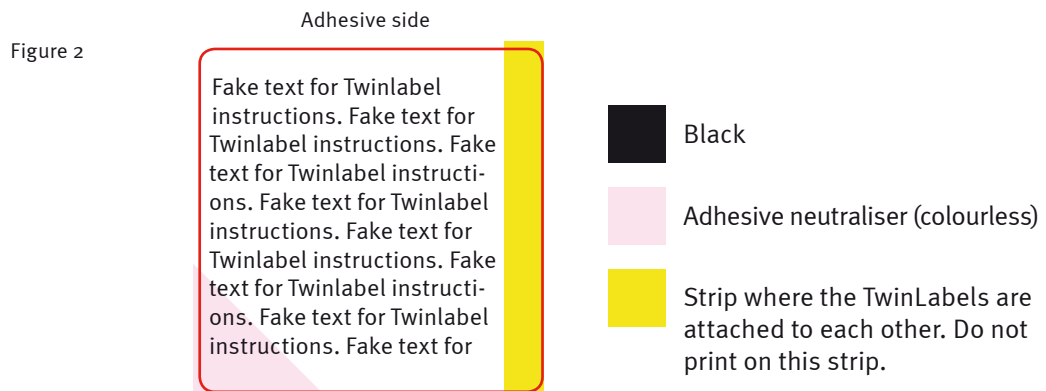
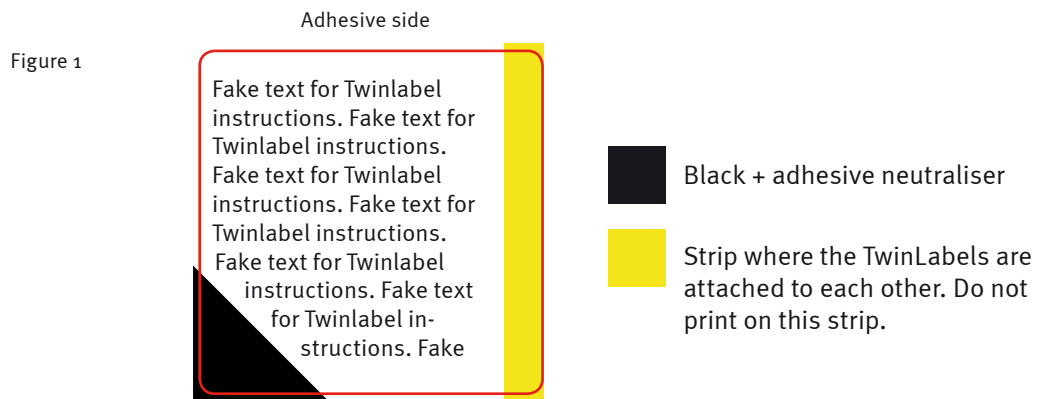
The front and the silicone sides of GeoTwinLabels are printed with 1 printing plate per colour. So if you use full colour on the front, you can also use full colour on the silicone side without subtracting from the number of colours used. Separate printing plates are required for the colours on the adhesive side. Regarding the printing, it's advisable not to use too dark colours on the inside of the GeoTwinLabel. This is to prevent it showing through the printing.

PAPER GEOTWINLABEL

There are a total number of 6 colours for a paper GeoTwinLabel. Of these, a maximum of 3 can be printed on the adhesive side. One colour on the adhesive side is reserved for adhesive neutraliser. Adhesive neutraliser can also be printed with a different colour. For example, if you print black text, we can add adhesive neutraliser to the black ink so that there is no need for an extra printing plate for the adhesive neutraliser. You should take this into account when formatting. Adhesive neutraliser is colourless and can be printed over the printing. If you wish to print with coloured adhesive neutraliser, you must leave room for this in the design (see Figures 1 and 2). If the label has to be varnished, then this is also 1 print run.

PLASTIC GEOTWINLABEL

Seven colours can be used for plastic GeoTwinLabels. For the rest, the same applies as for paper GeoTwinLabels.



BELOW ARE TWO EXAMPLES OF WHAT IS POSSIBLE IN TERMS OF COLOURS:

Example 1 (plastic):

Front: CMYK, Varnish (print run 1, 2, 3, 4 and 8)

Adhesive side: Black, Adhesive neutraliser (print run 5 and 6)

Silicone side: CMYK, silicone layer (print run 1, 2, 3, 4, 7)

Example 2 (paper):

Front: CMYK (print run 1, 2, 3 and 4)

Adhesive side: Black + adhesive neutraliser, PMS 485 (print run 5 and 6)

Silicone side: CMYK, primer, silicone layer (print run 1, 2, 3, 4, 7 and 8)

LAYOUT

A GeoTwinLabel consists of two layers of material that are glued on 1 side. The part that is attached must be at least 5 mm. There cannot be any printing on this. To make it easier to open the GeoTwinLabel, it's advisable to use adhesive neutraliser on a corner. You then place a peel-off symbol on the front. Below are two examples for the layout of a rectangle (Figure 3) and a circle (Figure 4).

Figure 3

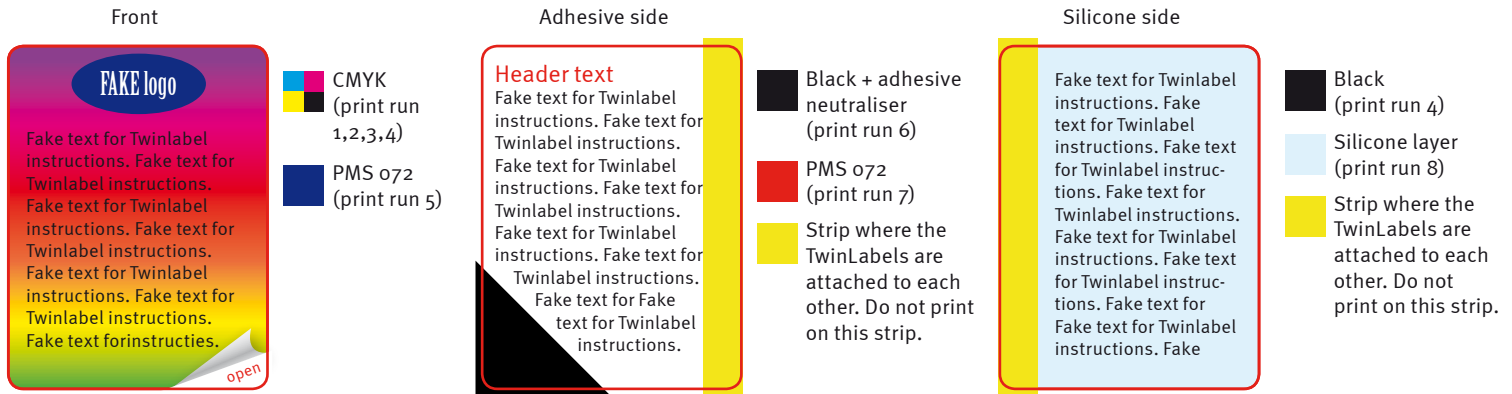


Figure 4

